
Pro`s Pro P103
and P501
Stringing Machine

User`s Manual

Table of contents:

Pack list..... 2

Parts and functions..... 3

Operating instructions..... 6

Maintenance and troubleshooting..... 8

Introduction

Dear customer,

Please read this manual carefully before using the stringing machine.

Pack list

The Stringing Machine P-103 consists of 3 cartons. Its inner parts all have a protective layer to defend against bumping or falling

The Stringing Machine Pro's Pro P-103 detailed pack list:

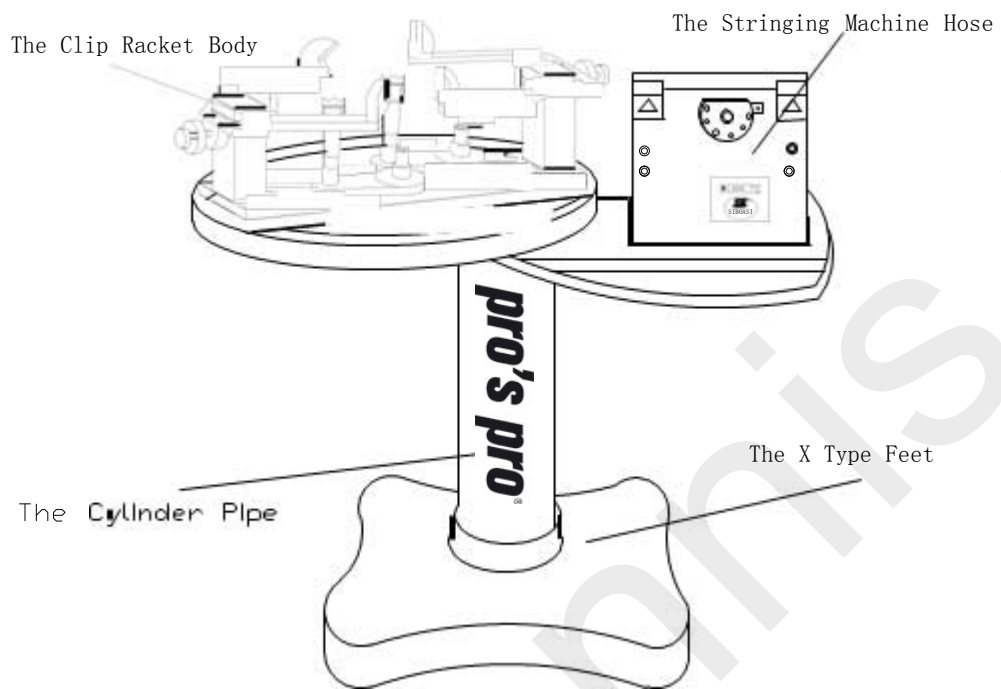
Preface number	Parts name	Quantity
1	The Stringing Machine Host Head	1
2	The Cylinder Pipe (P103 only)	1
3	X Type Feet (P103 only)	1
4	The Butterfly Form Cover	1
5	The clip racket body	1
6	14-17mm Open-mouth Wrench	1
7	4mm Hexangular Wrench	1
8	5mm Hexangular Wrench	1
9	6mm Hexangular Wrench	1
10	Tennis swivel clamps	2
11	The Fuse (2 A)	1
12	Power Cable	1

Parts and Functions

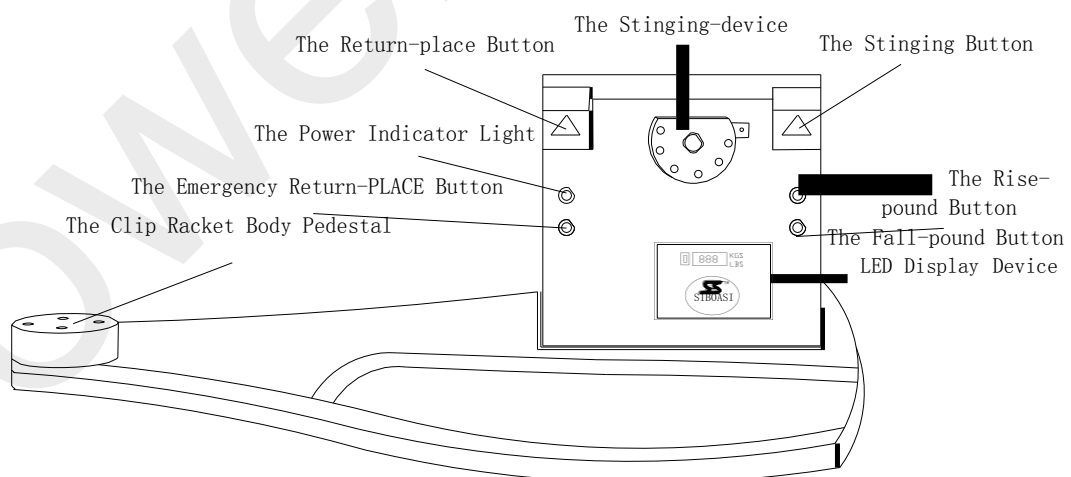
I. Components

1. Structure illustration P-501:

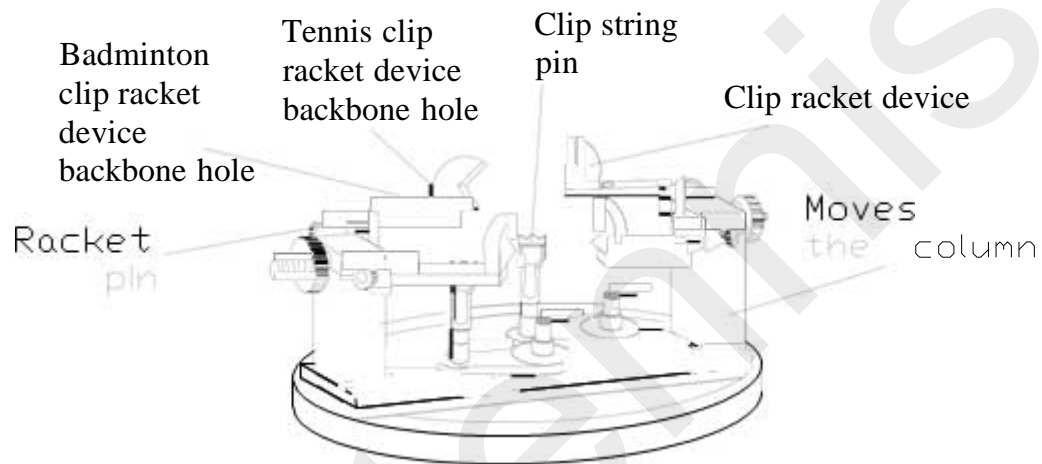




Main machine Host Head



Clip Racket Body



II. Function

- High-level vertical Stringing Machine.
- Specially designed string head.
- Suitable for any type of racket including Tennis, Squash, Badminton, Widebody, Extra Long Rackets).
- Six-point clip racket device system prevents any damage to the frame.
- Precise pound measurement.
- Innovative quick-release mechanism to prevent slippage and damage to the string.
- Electronic touch type pounds adjustment buttons make it easy and quick to increase or decrease the pounds.
- Switch choosing LED digital pound or kilogram display. Tension Range 10-90 pounds or 5-45 kilograms.
- The left and right clip racket device can be moved simultaneously, this makes it faster, more accurate and convenient to operate.

-
- The cool off fan enables the machine to work longer and more stable.
 - High-grade stainless steel swivel clamps, which hold the string tight, no slipping or damaging the string and easy to adjust.

Operating instructions

I. Unpacking and assembly

1. Carefully unpack the machine and the accessories, lift them out of the carton and check for any obvious damage. Check that all parts are included. Please keep the original packaging.
2. Align the cylinder pipe feet link plank with the X type feet and fix them together by tightening the screws
3. Adjust X Type feet mats to level the machine. Put the butterfly form cover over the top of the cylinder pipe to cover the X Type feet. Note- you have to unscrew and remove the Stringing Machine Host link plank first.
4. Fix the Stringing Machine Host link plate back on top of the cylinder pipe. Now fix the clip racket body to the main machine part. Align the machine with the Stringing Machine host head. Tighten the screws.

Note: To tighten the screws of the racket stringing machine at the steel parts, you must lock them firmly when installing.

II. Operation

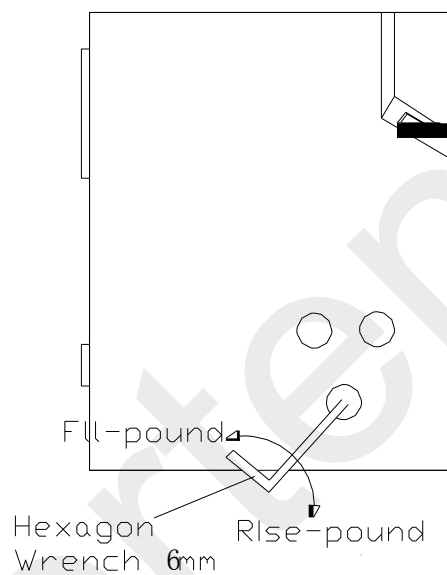
1. Ensure the machine is stable and assembled correctly.
2. Choose the correct power supply (220V, 50Hz) and plug in.
3. Turn the machine on, the Power Indicator light is on, the machine is in standby.
4. Touch the “Stringing-button” once lightly, the Stringing-device will turn clockwise, the Power Indicator light will be on. Touch the “Return-place” button once lightly, the Stringing-device will stop turning, and the Power Indicator light

will go out. Press the “Return-place” Button again, the Stringing-device will turn anticlockwise in a full circle. (If there is a string inside, the string gripper will stop turning automatically when the tension is reached)

5. In Standby mode, the required pounds can be set. To increase the pounds press the rise-pound button (LED display). To decrease the pounds press the fall-pound button (LED display).

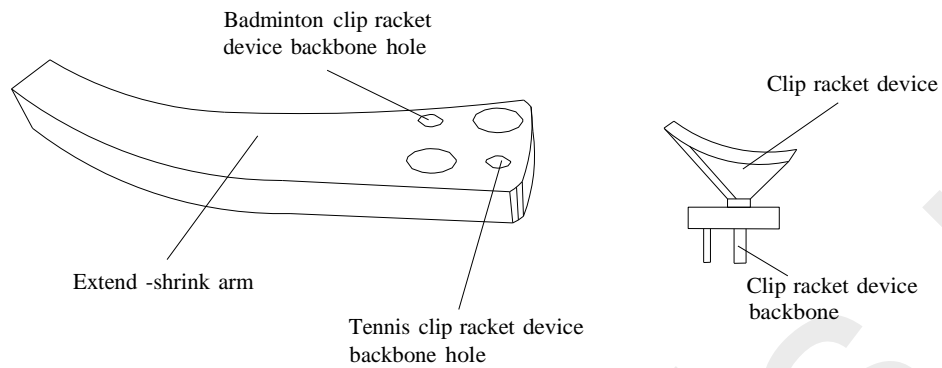
To calibrate the machine:

Calibration LB



6. After the normal operation of 2, 3, 4 and 5 above, set the required pounds, then you can put on the racket and string.

When clamping the racket, the position of the K clip:



Note – all parts of the stringing machine are adjusted and have been tested. The machine is calibrated.

After assembly you can start stringing.

Warning

After connecting power supply, there is high pressure electricity in the machine, don't open the machine casing. Do not let minors play with the machine!

Maintenance and troubleshooting

I. Maintenance

1. Keep the stringing machine in a dry and safe place, ensure to keep it away from dust, grease, moisture and any type of heat.

2. Every six months inject a little amount of lubricant on the stringing hook's adjustment knob, the clip racket arm's adjustment knob, the clip racket body to turn part and the stringing-device's steel ball part.

3. Don't allow water, oil and the other acidic material and alkaline material to enter the inside of the machine.

4. Use a little brush of soft cloth to clean the surface dust. Don't use any liquid or abrasive cleaners.

5. Please turn off the power switch and plug out power cable when not used for some time.

II. Troubleshooting

1. If the power switch is on but the indicator does not light and the machine does not work:

- There is no electricity or the power cable may be loose, please check power and check power cable is securely plugged in.
- Check the Fuse. It may be burnt out. Replace the fuse if necessary.
- The machine inner part may be broken down. (Please contact your dealer).

2. If the power switch is on and the indicator is lit but the machine still does not work:

- The stringing-button has locked and doesn't move. (Please contact your dealer)
- The drivers make bad contact or are damaged. (Please contact your dealer)
- The machine inner part breakdown. (Please contact your dealer)

3. The string slips through the stringing-device gripper or the string clamp does not tightly grip the string:

-
- The stringing-device's screw is loose, please lock tightly.
 - The contact-part of the stringing device and string has oil stains, please use alcohol and clean with a soft cloth.

4. When stringing, the pounds on the LED are not accurate:

- Please check whether the power supply voltage is too high or too low. (Please connect with over 200W stable voltage).
- The machine inner part may be broken down. (Please contact your dealer).

Warning

This product is professional sports goods equipment. Any alterations or changes made to the product for any other purpose, that result in injury or losses, we do not take any legal responsibility.